

NEW YORK SHOPPING TRIP

A whirlwind excursion to one of our favourite bustling cities

BELLE Top
(OF13-1003-2)



THE ULTIMATE PACKING MUST-HAVES

- **Warm Fall Jacket**

Remember function is just as important as fashion when you're shopping for the long haul. The Ginger Jacket (OW13-114-3) will not only keep you dry but the long jacket length, hand warmer pockets, and sherpa hood lining will keep warm and cozy.

- **Camera**

A must have for snapping memories of the beautiful city lights and art galleries.

- **A Versatile Sweater**

Pack a versatile sweater like the Clarmont (OF13-905-2) that can be worn during the day and for a night out with friends. You'll always look great and have more room in your luggage.

- **A Good Read**

Pack a good book, magazine, or Kindle for keeping you entertained on the plane

- **The All-In-One Scarf**

Always pack a scarf that can be paired with numerous outfits. Our Spice scarf (ORB12-0060-4) is an extra wide woven tapestry in an array of beautiful rich colours that can be worn at the neck, as a shawl or as a warming lap blanket.

- **The Travel Bag**

The perfect travel bag needs to be stylish, functional and easy to carry. The Tiger's Eye bag (OF13-15-1) has a convenient outside pocket, inside zippered pocket and inside organizer pouches with comfortable shoulder handles and removable, adjustable cross-body strap.



GINGER Jacket
(OW13-114-3)

JOLIE Blouse
(OF13-1107-2)

LUXE Jacket
(OF13-1450-2)

CORAL Bag
(OF13-14-1)



JOLIE Blouse
(OF13-1107-2)



ATLAS Vest
(OF13-150-1)

CLARMONT Sweater
(OF13-905-2)

QUARTZ Bag
(OF13-113-1)

SPICE Scarf
(ORB12-0060-4)



TUNDRA Jacket
(OW13-114-1)

SATI Sweater
(OF13-908-1)

TAZA Top
(OF13-1100-1)

CREEKSIDE Toque
(OF12-52)



BORDEAUX Dress
(OF13-1351-2)



Rocking my Elvie jacket and snapping photos

Oh
» the
PLACES

YOU
will
GO

Seeing the world on a journey of a lifetime



Leaving on a jet plane...



Lively Moroccan market



My Comfy Carmont sweater



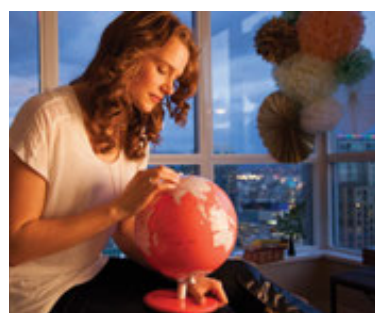
New York City in the Winter



Breakfast at my favourite French Cafe



My Astra Jacket is keeping me warm in Central Park



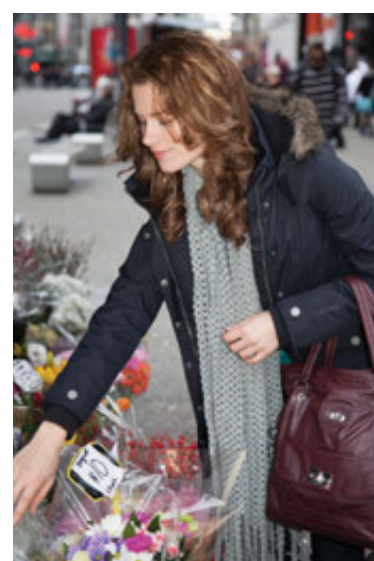
Dreaming of my next destinations in my Lyon Top



A day of shopping in my Vista jacket

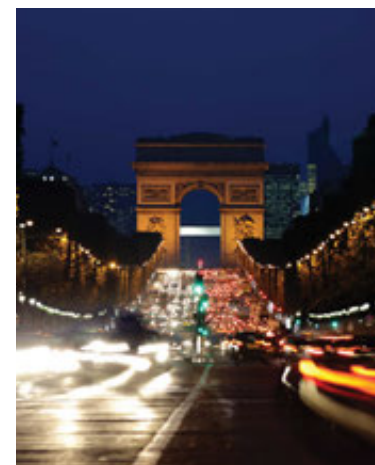


Day of site seeing in London

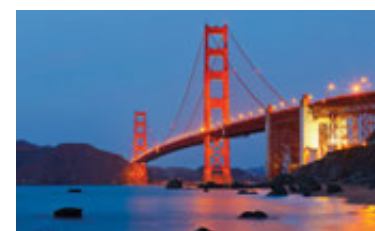


Grabbing flowers in my Tundra parka

FOLLOW OUR
journey
www.journeybyorb.com/blog
www.pinterest.com/JourneybyOrb



The glowing lights of Paris



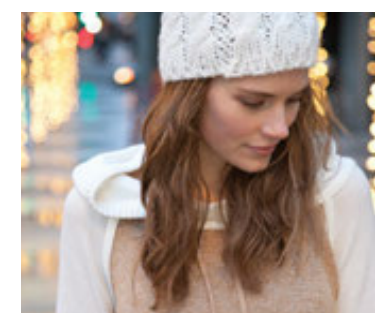
My first trip to San Francisco



Love the chic faux fur collar on my Voyage jacket



Amazing view of Paris



A soft knit Zida sweater for evening strolls



KARMA Sweater
(OF13-904-1)

ADA Blouse
(OF13-500A-1)



SAHARA Pullover
(OF13-1431-1)

analyze this

EXPLORE THESE UNIQUE PRINTS, TEXTURES AND KNITS THAT ARE TRENDING THIS SEASON.



SECRET (OF13-503-1)

Baroque Love Meets Boho-Chic: With silky quick-dry and wrinkle-release fabric, this ornate paisley print blouse is the perfect travel companion day and night.



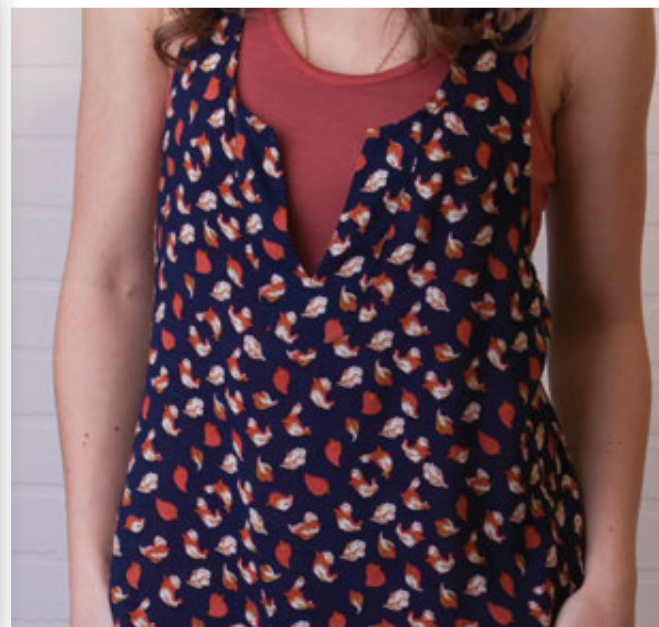
EIFFEL (OF13-1406-2)

Comfortable Suiting: This tweed blazer-style cardigan made from a suiting knit look-a-like is comfortable and easy to care for. Get the tailored look and say good-bye to dry-clean only.



JASMINA (OF13-1404-1)

High pile layers: This rich, temperature regulating jacket is the perfect layer to add texture to your wardrobe. The wool-blend fabric, oversized hood and lined interior make this jacket a feel good layer.



SELMA (OF13-1051A -1)

The playful conversation print: This detachable two-piece tank with whimsical bird graphic is versatile and light - the perfect tank to spark a conversation.



CHATEAU Jacket
(OF13-1403-2)

Behold (OF13-900-1)

Relaxed, loose cut colour blocked crew neck sweater pullover is a trendy statement that will be a perfect addition to your everyday journey.



Bordeaux (OF13-1351-2)

Comfortable yet sophisticated dress has a removable slip and adjustable sleeves- the perfect travel outfit to always look put together.



Fall's
**FAVOURITE
KNITS**



Karma (OF13-904-1)

Soft feminine long cardigan is comfortable and breathable – a perfect paring with jeans for a casual look or an elegant dress for a night on the town.

Zida (OF13-94-1)

Hooded pullover sweater has a softly draped cowl neck that is excellent for everyday layering.



1
FRONT

{Thalia}
**ONE DRESS
THREE WAYS**

The ultimate in versatility, our Modal Jersey dress, THALIA OF13-1350-1, is designed with different colours and prints on the Front, Back and Inside for three unique looks!



2
BACK



3
INSIDE
OUT

MORE MULTI-FUNCTIONAL FASHIONS

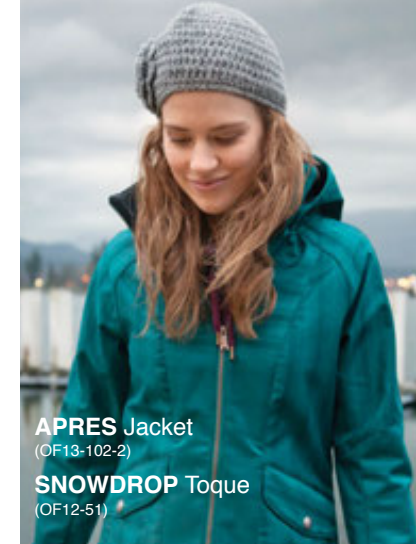
MEDINA: Tank with removable Chiffon layer
VOYAGE: Bedford Jacket with reversible fur collar
ATLAS: Reversible Faux Suede/Twill Vest



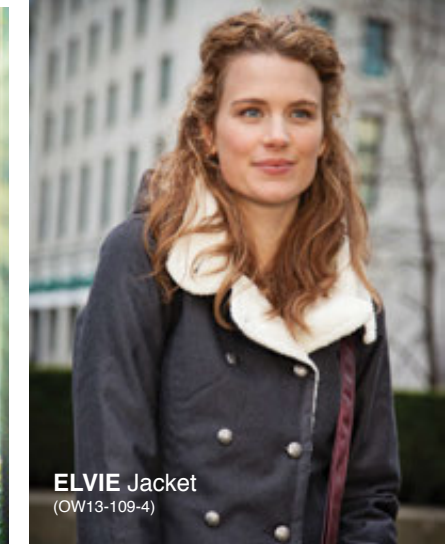
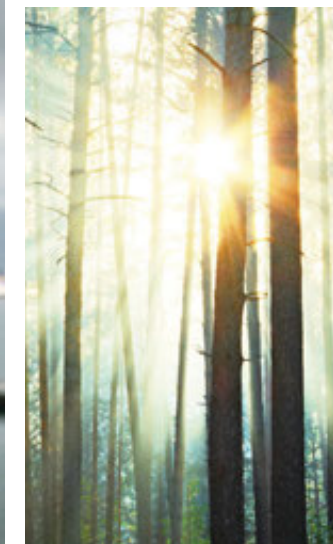
SPIRIT Jacket
(OW13-105-1)



ASTRA Jacket
(OW13-101-1)



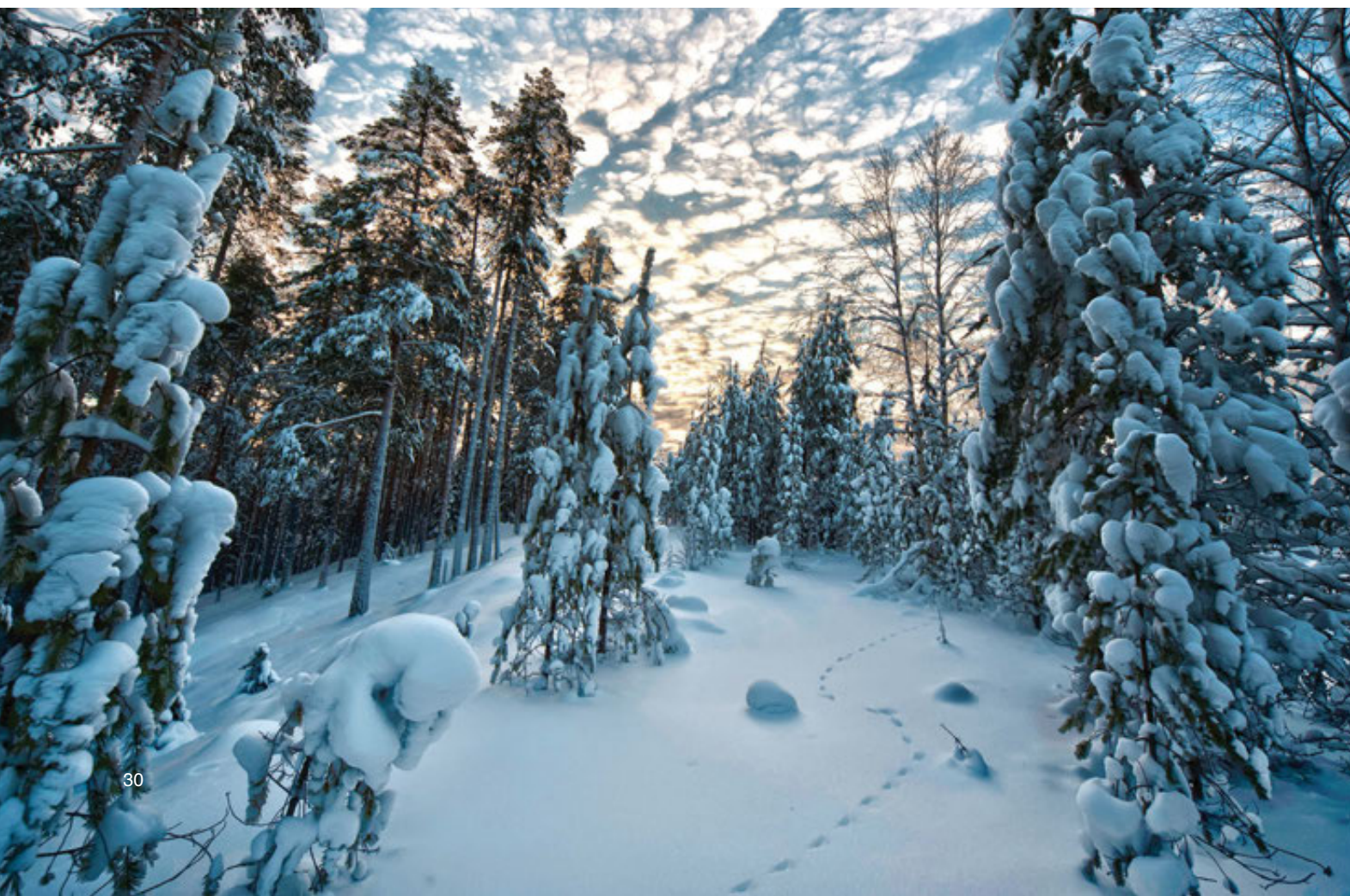
APRES Jacket
(OF13-102-2)
SNOWDROP Toque
(OF12-51)



ELVIE Jacket
(OW13-109-4)

We Were Born Here

We are lucky enough to live in beautiful Vancouver, BC, where you can ski or snowboard in the morning and walk on the beach in the afternoon...the price we pay for such good winter fortune is that it's likely to be a rainy walk along the beach!



It is precisely because of our amazing climate that we've had to rise up to meet tough outerwear design challenges and for the past 13 years that is exactly what we have done. Our roots in the snow sports industry go deep. Stemming from our wide experience, we have built a solid reputation for lasting quality and performance that also looks and feels beautiful. It is a difficult thing to create a jacket that will take you from the snowy mountains to the rainy sidewalks in style but we have proved it is possible by developing jackets that will do just that.

Our jackets are made from waterproof breathable fabrics that are coated with a microporous hydrophobic (water loathing) layer on the outside. The micro pores are tiny enough to block outside water from penetrating through to the skin.



MULBERRY Jacket
(OF13-120-1)



GINGER Jacket
(OW13-114-3)

People and Planet

Orb strongly believes in our continuous commitment to improving and empowering our community and environment on a local and global level. Our mission statement to enhance quality of all life, is fully ingrained in every facet of our organization, right through to how we encourage the personal growth of our employees, strengthen our relationships with our suppliers, support and build our community, and impact the environment and planet.

OUR GOAL

Our goal is to strengthen a positive relationship with our natural environment and community by harmonizing an ecological and economically rich planet with exploring **WORLDWISE** methods of creating apparel.

WORLDWISE

WORLDWISE is implementing business practices designed to respectfully, effectively and efficiently optimize world resources.

Free The Children

Free The Children is an inspiring organization and youth movement dedicated toward eliminating the exploitation of children around the world, by encouraging children to create programs and volunteer in initiatives that support the cause of children helping children.

With Free The Children being our main charity, we work closely with the organization through our corporate initiatives and every year we look forward to volunteering for We Day.

To find out more about this amazing organization, please visit www.freethechildren.com.

WORLDWISE Fabrics This Year:

Recycled Polyester

We are utilizing recycled polyester in three of our garments this year. Our Apres jacket (OF13-102-2) is our 3 layer bonded softshell made from 100% recycled polyester. It can also be found in the insulation of our reversible Atlas vest (OF13-150-1) and Voyage jacket (OF13-100-2).

Bluesign Approved Fabric:

Bluesign approved fabric means that the garment was manufactured with fabric according to bluesign’s internationally recognized standard. This year, majority of our outerwear is made from bluesign approved fabric. The approved fabrics this season are the tweed and dobby fabrics.

Tencel Fabric:

Tencel Fabric is a beautiful eco-friendly fabric derived from renewable eucalyptus trees. It can be found in our Jour pant (OF13-200-1) and Cherie jacket (OF13-123A-1). The result is a soft, silky fabric and a healthier planet.

Eco Durable Water Repellent:

We have switched to a fluor carbon-free Eco DWR finish on our outerwear in place of regular DWR that contains harmful carcinogens.



SERENE Pullover
(OF13-1430-2)

TIGER'S EYE Bag
(OF13-15-1)

TIPPI Scarf
(ORB12-0031-2)

E.T.H.I.C.S.

GLOBAL COLLECTIVE GRAVY CHAIN

EARTH
ENRICHED ENVIRONMENT THROUGH EFFECTIVE AND RESPECTFUL UTILIZATION OF RESOURCES
Our ultimate goal is to design, produce and deliver consistent, quality, products and services in an environmentally-friendly manner. GCD strives to develop innovative and commercially-viable methods to accomplish this goal while enabling success in all other initiatives laid out in the Gravy Chain.

TEAM
INSPIRED EMPLOYEES, REPS AND CONSULTANTS
Every individual is appropriately challenged, personally gratified, fairly treated, deservedly paid and part of a team that is progressively moving forward in an enhanced direction. The company environment has all employees being gratified to a degree that they choose to stay unless there are goals that can not be reached within the company. The effect is a brilliant team inspired by inspiring others while engaged in relevant business utilizing their talents in doing what they love to do. The intent is to support peoples goals and aspirations both within and without the company if need be, in a mutually respectful, ecological method.

HARMONIZED BUSINESS
HEALTHY AND PROFITABLE SUPPLY CHAIN
GCD enables all to make fair profits from all transactions with our company. Suppliers are treated fairly and communicated with openly.
In the event that unexpected issues arise, it is our intent to move forward in a way as to minimize potential impact to all involved. It is important that suppliers receive both financial and personal gratification from their involvement with GCD. To ensure success, we choose to do business with partners who operate within an ethical, fair and truthful manner; have similar values to Global Collective and have reasonable tolerances for situations that arise out of our direct control. GCD is committed to win-win supplier relationships with clear and pre-established expectations laid out in advance.

PURPOSE

ENHANCE THE QUALITY OF ALL LIFE.

INVESTORS
HAPPY SHAREHOLDERS
It is important that shareholders receive a good return on investment. It is the shareholders' responsibility to assemble the right team, make available the right tools and provide the environment so the team can do its magic. Profit is to GCD what oxygen is to people. Nothing happens without it. It's not our primary focus – it is a necessary ingredient in our recipe for success.

CUSTOMERS
RETAILERS PROFIT AND END USERS ARE INSPIRED
GCD consistently delivers quality, inspiring, supportive, lasting, fun and rewarding relationships, products and service. We meet and/or exceed customer's expectations by way of eliciting their wants and needs and fulfilling them to a level of excellence. GCD enables retailers and distributors to provide people with their all time favorite garments; the favorite shirt that lasts five years; the pant that provides optimum comfort and fit; and comfortable, reliable outerwear that keeps people warm and dry, season after season. The people who purchase our products love wearing them, look great in them, talk about the brands and look forward to buying more.

SOCIETY
COMMUNITY CONTRIBUTION
Our objective within society is to contribute positively to the well being of employees, families, friends, community, country and world at all times and to inspire all people and companies to do the same. Purpose beyond self through utilizing the company's resources to provide momentum to all involved. Purpose beyond self is the inspiration of our momentum. The results created from the successful maintenance of the E.T.H.I.C.S. Gravy Chain is happy, effective people with greater contribution to their families, friends, communities and yes, the profitability of this company.

SPECIAL THANKS:

Yoga Jeans by Second Denim Co.
Model wearing Yoga 22 Mid Rise Skinny
Rinse Indigo



Cypress Mountain, Vancouver, B.C.
www.cypressmountain.com



PHOTOGRAPHY: Justin Cathcart

MODEL: Jacqueline Blackman

CATALOGUE LAYOUT: Jacqueline Blackman and Rebecca Wong-Rose

HAIR & MAKEUP: Keisha Lowes

BEHIND THE SCENES THANK-YOU:
Cate Rodrigue, Melissa Walker, Carrie Gardiner, Chris Gardiner, Clayton Blackman, Amoreena Penta, Dion Willis, Marion Carter, Chris Manaras, Jane Kyle, Randi Beazer, Mike Sato, Leslie Lee and Glenn Taylor